

# 207' DP-2 PSV Madison

Specifications 3/16

## Main Particulars

Length Overall	207 ft	63.1 m
Length BP	195 ft	59.4 m
Beam	53 ft	16.2 m
Depth	19 ft	5.8 m
Light Draft	7 ft	2.1 m
Loaded Draft	16.2 ft	4.9 m
Summer Freeboard	2 ft	0.6 m
Light Ship	1,405.5 LT	1,431.6 MT

## Capacities

Drill Water (100%)	130,194 USG	492.8 m <sup>3</sup>
Potable Water (100%)	44,278 USG	167.6 m <sup>3</sup>
Fuel (98%)	158,487 USG	599.9 m <sup>3</sup>
Liquid Mud (98%)	6,102 BBLS	970.0 m <sup>3</sup>
Dry Bulk (100%)	6,000 ft <sup>3</sup>	170 m <sup>3</sup>
Dead Weight	2,278 LT	2,315 MT

## Cargo Deck

Tonnage	1,740 LT	1,768 MT
Strength	540 lbs/ft <sup>2</sup>	2.64 MT/m <sup>2</sup>
Length	145 ft	44.2 m
Width	45 ft	13.7 m
Clear Area	6,525 ft <sup>2</sup>	606.2 m <sup>2</sup>

## Tonnage

Gross	N/A	1,598 ITC
Net	N/A	479 ITC

## Machinery

Main Engines	2 - CAT 3516B, 2375 BHP/1771 kW @ 1600 RPM	
Azimuthing Drives	2 - SteerProp SP25, 2375 HP/1771 kW	
Main Generators	2 - CAT 3408C, 370 kW @ 480 VAC	
Emergency Generator	1 - CAT 3304, 105 kW @ 480 VAC	
Bow Thrusters	2 - Brunvoll FU-63 CPP, 1000 HP/745 kW	
Bow Thruster Engines	2 - CAT 3508B, 1050 BHP/783 kW @ 1600 RPM	
Liquid Mud Circulation	Vortex Ventures System	
Tugger Winches	1 - 10 LT/MT	

## Performance

Maximum Speed	13 kts	
Cruising Speed	11 kts	
Max Fuel Consumption	240 USG/Hr	21.8 m <sup>3</sup> /24 Hrs
Cruising Fuel Consumption	150 USG/Hr	13.6 m <sup>3</sup> /24 Hrs
DP/Standby	75 USG/Hr	6.8 m <sup>3</sup> /24 Hrs
In Port	12.5 USG/Hr	1.1 m <sup>3</sup> /24 Hrs

## Discharge Rates

Drill Water	600 USG @ 200 ft	136.3 m <sup>3</sup> /hr @ 61 m
Potable Water	250 USG @ 200 ft	56.8 m <sup>3</sup> /hr @ 61 m
Fuel	300 USG @ 200 ft	68.1 m <sup>3</sup> /hr @ 61 m
Liquid Mud	1,000 USG/min @ 165 ft	227.1 m <sup>3</sup> /hr @ 50 m
Dry Bulk	735 SCFM Free Air @ 100 PSI	20.8 m <sup>3</sup> /min @ 6.9 bar

## Accommodations

Berths	28 (berths in 12 cabins)	2 x 1 berth cabins
Crew Max.	13	7 x 2 berth cabins
Others		3 x 4 berth cabins
Including Hospital Lounge (01 Deck)	15	
Lounge (Main Deck)	5 Persons	
Mess	15 Persons	
Freezer Capacity	12 Persons	
Cooler Capacity	8.8 m <sup>3</sup> (Walk-in) 1 m <sup>3</sup> (Reach-In)	
	7.8 m <sup>3</sup> (Walk-in) 1 m <sup>3</sup> (Reach-In)	

## Electronics & Controls

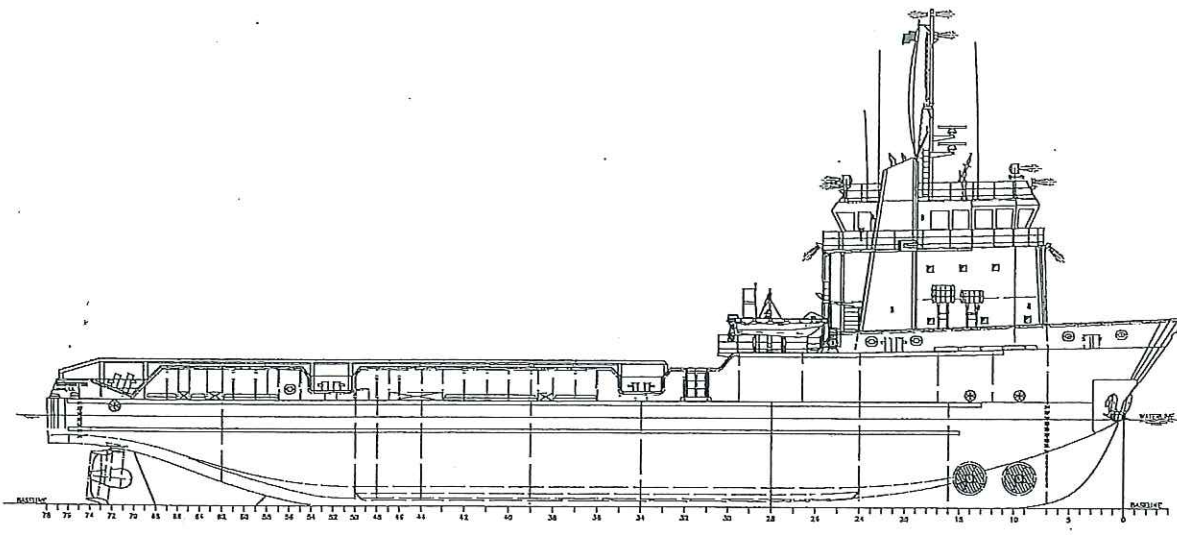
Joystick	4-K-Sim
Depth Sounder	JRC IES-10
DGPS	2 - included w/ DPS (C-Navigator II, R4 Navigator)
Dynamic Positioning	Kongsberg SDP-21
Gyro	2 - included w/ DPS
SSB	GMDSS
VHF	3 - Standard Horizon
Radar(s)	2 (each) - JRC JMA 7710-6
Radio System	A3 GMDSS
Internet E-mail	Globe Wireless
Weather Radio	XM

## Special Equipment

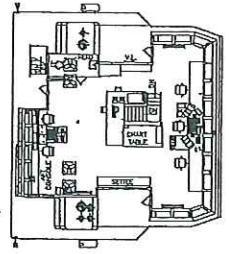
External FIFI	2000GPM: Stang #D0263-11EP
Survival Craft	(6) 15 Man Inflatable Rafts
Windlass	Coastal Hydraulics 1, 080 ft @ 2" Chain 329 m of 51 mm Chain
Rescue Boat	SOLAS FRC, 1 x 6 Person

## Documentation

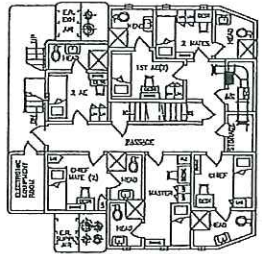
Class	ABS +A1, +AMS, +DPS -2
Flag	United States
Solas	Full
USCG	OSV, Subchapter L & Subchapter I Vessel
Year Built	2003
Official Number	1136167
Radio Call Sign	W.D.D. 5977
Builder	Bollinger Lockport
Hull Number	435
IMO Number	9292319



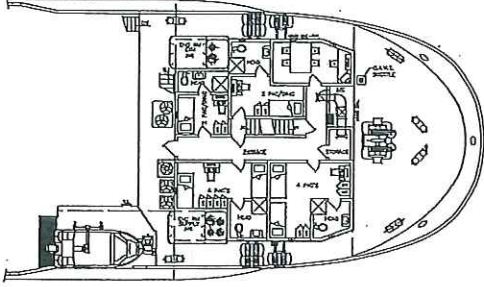
PROFILE



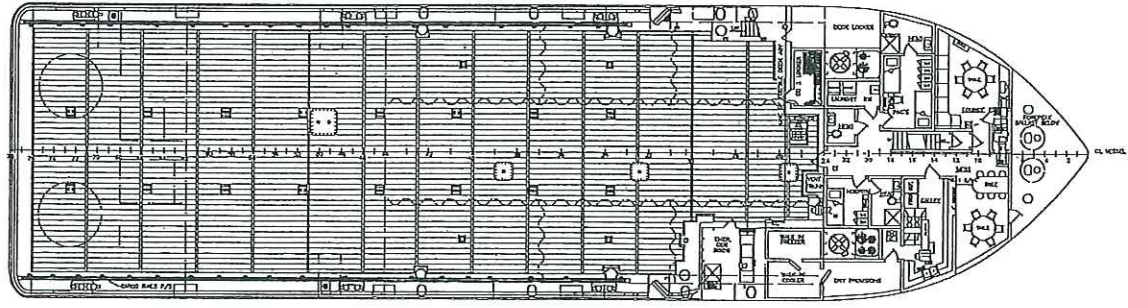
PILOTHOUSE ARRANGEMENT



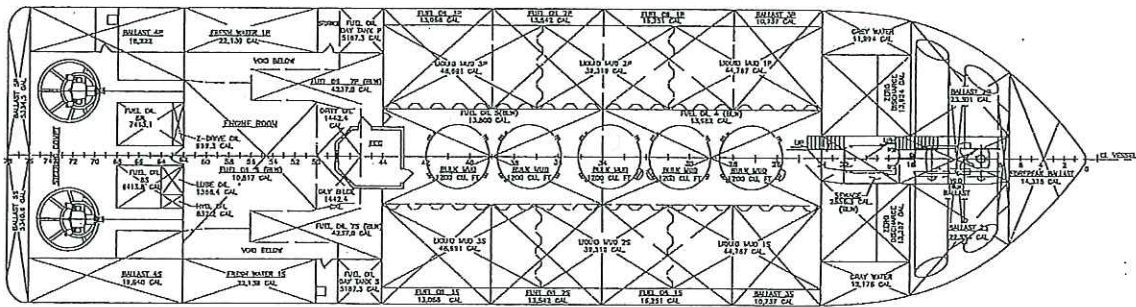
O2 DECK



O1 FOC SLE DECK



MAIN DECK ARRANGEMENT



HOLD PLAN

DP Capability Plot

